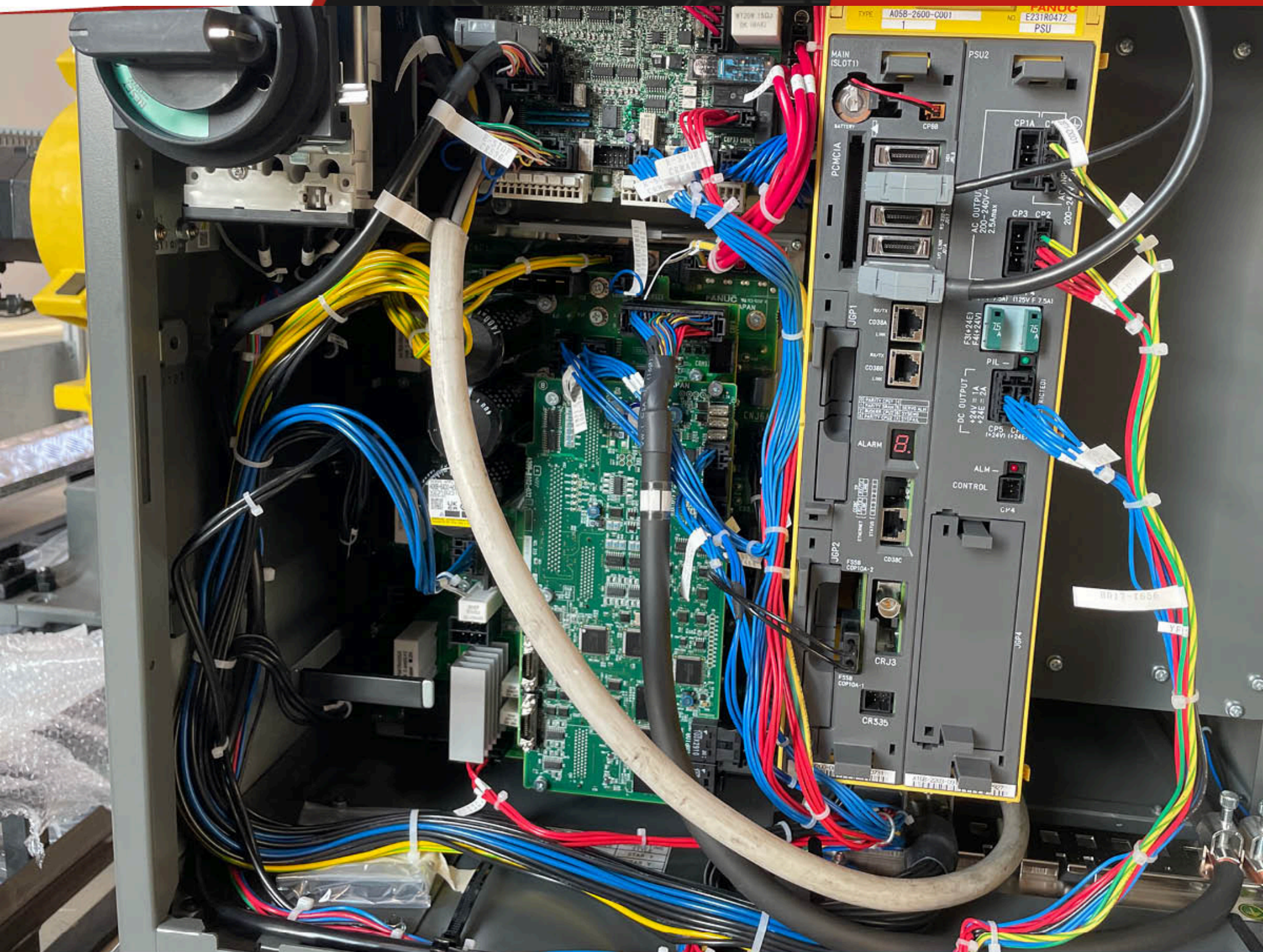




**Repairing the Servo Drive  
of a Fanuc Robot**

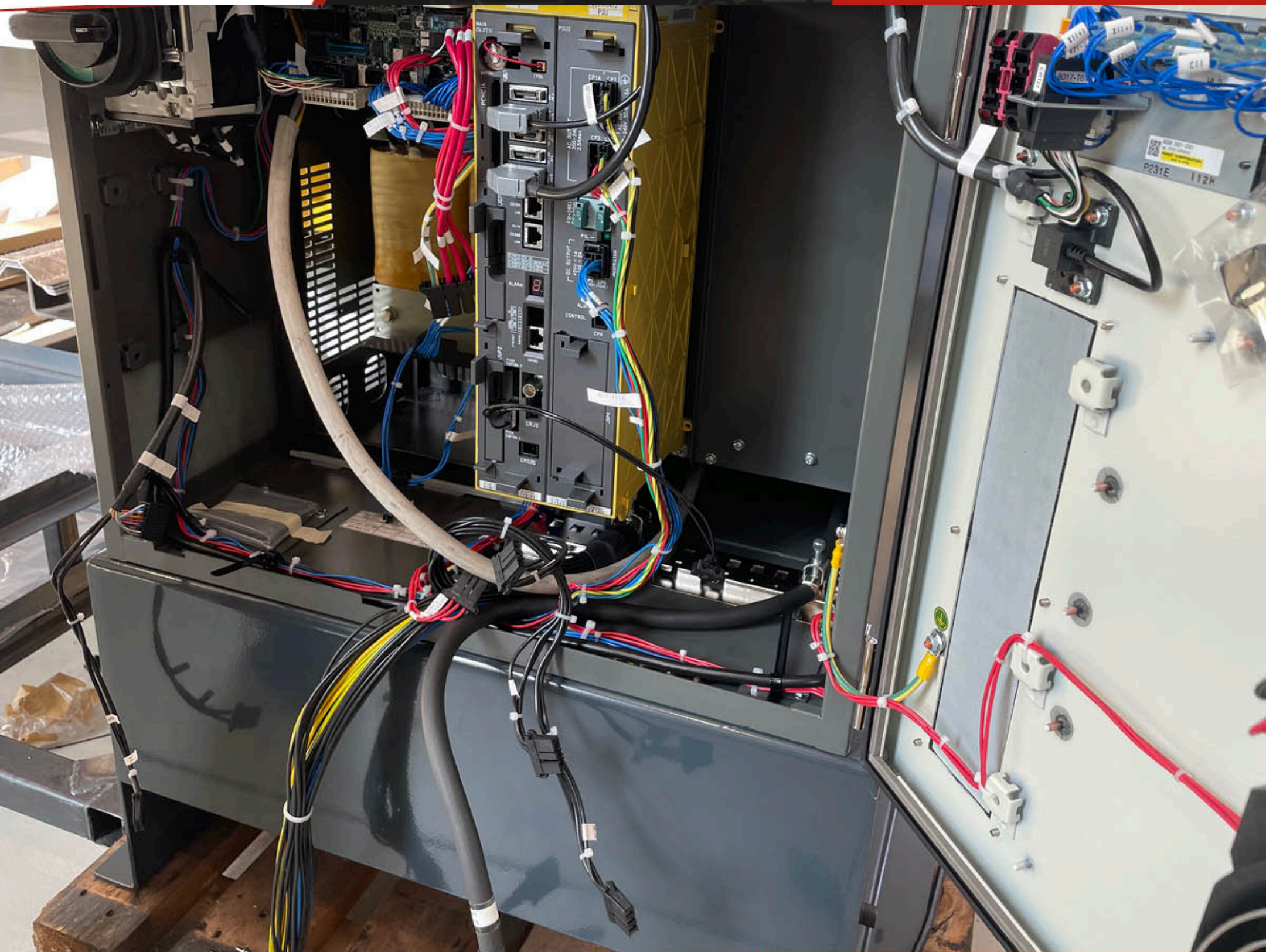




## COMPLETE CUPBOARD

Repairing the Servo Drive  
of a Fanuc Robot





## CUPBOARD WITHOUT DRIVE

Repairing the Servo Drive  
of a Fanuc Robot

## **Step 1: Disassembly and Inspection**

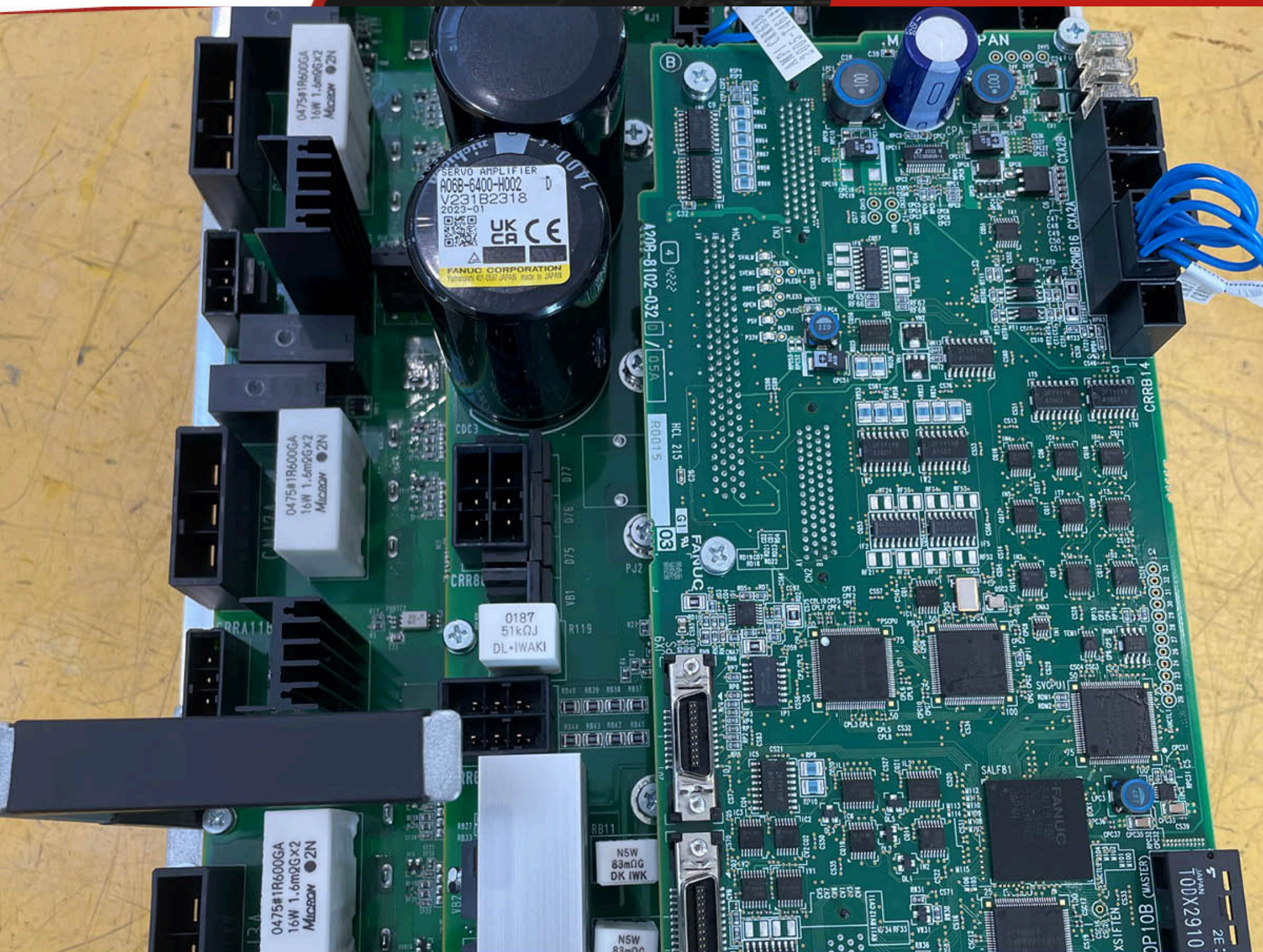
Our team began the process by disassembling the damaged servo drive.

During this phase, a thorough inspection was conducted to identify the cause of the malfunction.

The objective was clear:  
restore the robot to its maximum efficiency.

**Repairing the Servo Drive  
of a Fanuc Robot**





## DRIVE REMOVED

Repairing the Servo Drive  
of a Fanuc Robot



## **Step 2: Repair and Overhaul**

Our technicians in the Repair Workshop put time and energy into bringing the servo drive back to its optimal state, using state-of-the-art tools and following strict quality standards to ensure proper restoration.

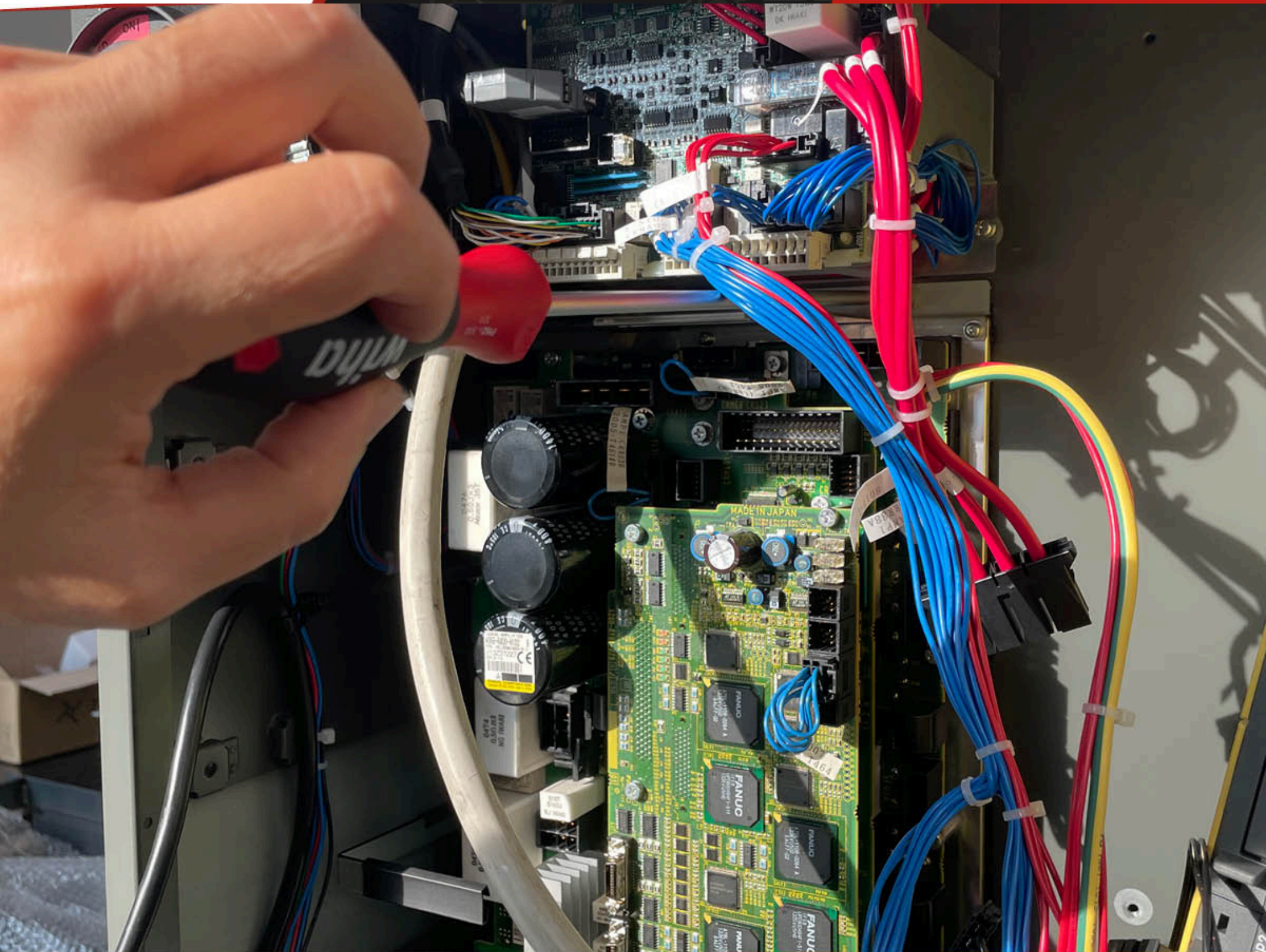
**Repairing the Servo Drive  
of a Fanuc Robot**

## **Step 3: Testing**

Before delivering the Robot to the customer, our team made sure to test the component.

Testing is crucial to ensure that the Robot is ready for its return to work. Only when we are 100% sure of its performance do we proceed to the next step.

**Repairing the Servo Drive  
of a Fanuc Robot**



## DRIVE INSTALLATION

Repairing the Servo Drive  
of a Fanuc Robot



## **Step 4: Reassembly and Customer Testing**

Having reassembled the repaired servo drive on the Robot, our technicians made sure it was working properly.

The robot was returned to the customer for direct field testing to make sure the island was back in working order for parts production.

**Repairing the Servo Drive  
of a Fanuc Robot**





**ASSISTEC**

**ELECTRONIC ASSISTANCE**

If you would like to know more about our electronic support services, please contact us!

 **vendite@assistec.cc**

 **0522 989436**

**assistec.cc**

**Repairing the Servo Drive  
of a Fanuc Robot**